

Techwood[®]
POSITIVE TECHNOLOGY

TRO-6855

**FOOD
PROCESSOR
INSTRUCTION MANUAL**



Dear consumer, Please read these instructions carefully before use in order to avoid damage due to incorrect use and to better understand the functions of this product. Please pay particular attention to the safety guide.

If you pass the device on to a third party, these Operating Instructions must also be handed over.

Please keep them for future references.

IMPORTANT SAFEGUARDS

- ❑ Please read these instructions carefully before use.
- ❑ Keep present instructions for future references.
- ❑ Check that your mains voltage corresponds to that stated on the appliance.
- ❑ Only use the appliance for domestic purposes and household or similar applications such as:
 - staff kitchen areas, in shops, offices and other working environments;
 - Environment type like :
 - Farm Houses • Bed and Breakfast.
- ❑ -by clients in hotels, motels and other residential type environments;
Only use the appliance in the way indicated in these instructions.
- ❑ Never use this unit near bathtub, shower, wash-hand basins or other containers with water.
- ❑ Never use this apparatus near water projections.
- ❑ Never use this apparatus with the wet hands.
- ❑ If, unfortunately the apparatus is wet, immediately withdraw the cord of the socket-outlet.
- ❑ Inform potential users of these instructions.
- ❑ Never leave the appliance unsupervised when in use.
- ❑ The appliance must be used only for its intended purpose. No responsibility can be taken for any possible damage caused by incorrect use or improper handling.
- ❑ Children and persons with disabilities are not always aware of the danger posed by the use of appliances.
- ❑ This appliance shall not be used by children. Keep the appliance and its cord out of reach of children.
- ❑ Appliances can be used by persons with reduced physical, sensory or mental capabilities or lack of experience and knowledge if they have been given supervision or instruction concerning use of the appliance in a safe way and if they

understand the hazards involved. Children shall not play with the appliance

- Switch off the appliance and disconnect from supply before changing accessories or approaching parts that move in use
- There is a potential injury from misuse.
- Always disconnect the appliance from the supply if it is left unattended and before assembling, disassembling or cleaning.
- Care shall be taken when handling the sharp cutting blades, emptying the bowl and during cleaning
- Regarding the instructions for cleaning surfaces in contact with food or oil, thanks to refer to the below paragraph "cleaning and maintenance" in manual.
- Regarding the instructions for the use of accessories, operation times and speed settings, thanks to refer to the below paragraphs
- This device is not a toy, do not leave small children or people with disabilities to play with.
- In order to ensure your children's safety, please keep all packaging (plastic bags, boxes, polystyrene etc.) out of their reach.
- Caution ! Do not allow small children to play with the foil :
THERE IS A DANGER OF SUFFOCATION !
- From time to time check the cord for damages. Never use the appliance if cord or appliance shows any signs of damage.
- Never immerse the appliance in water or any other liquid for any reason whatsoever.
- Never place it into the dishwasher.
- Never use the appliance near hot surfaces.
- Do not operate the appliance with a damaged cord or plug, or after the appliance has been damaged in any manner. If the supply cord or appliance is damaged, it must be replaced by the manufacturer or its service agent or a similarly qualified person in order to avoid a hazard.

- ❑ Disconnect the power source cable before any operation of cleaning of maintenance and accessories assembly.
- ❑ Never use the appliance outside and always place it in a dry environment.
- ❑ Never use accessories, which are not recommended by the producer. They could constitute a danger to the user and risk to damage the appliance.
- ❑ Never use any other connector than the one provided.
- ❑ Never move the appliance by pulling the cord. Make sure the cord cannot get caught in any way.
- ❑ Never wind the cord around the appliance and do not bend it
- ❑ Ensure that the power cord does not come into contact with hot parts of this unit.
- ❑ Make sure the appliance has cooled down before cleaning and storing it.
- ❑ The temperature of accessible surfaces may be very high when the appliance is operating. Never touch these parts, of apparatus, to avoid burning itself.
- ❑ Make sure the appliance never comes into contact with flammable materials, such as curtains, cloth, etc...& the power cord and plug do not come in contact with water.
- ❑ Before cleaning, always unplug the appliance from the power supply and let it cool down.
- ❑ This appliance is not intended to be operated by means of an external timer or separate remote-control system.
- ❑ Always place the unit on a flat surface. Ensure, also, not to cover the device and not to put anything on it.
- ❑ Always remove the plug from the wall socket when the appliance is not in use.
- ❑ When using an extension lead always make sure that the entire cable is unwound from the reel. Use solely CE approved extension leads. Input power must be at least 16A, 250V, 3000W.
- ❑ Incorrect operation and improper use can damage the appliance and cause injury to the user.

- This device, designed for home use, complies with standards relating to this type of product.
- The appliance must be used and rested on a table or flat & stable surface.
- The item must not be left unattended when it is connected to main supply.
- The item is not to be used, if it has been dropped or if there are visible signs of damage or if it is leaking.
- This appliance is only intended for household use.

GENERAL INFORMATION

The symbol "OPEN BOOK" means a recommendation to read important things contained in the record.



The symbol "BIN" crossed out, abbreviation WEEE (Waste of Electrical and Electronic Equipment) means that at the end of life, it should not be discarded with household waste, but filed to the sorting of the locality. Waste recovery can help preserve our environment.



The symbol "CE" is the guarantee of compliance with harmonized European standards, voluntary, reflecting the essential requirements into technical specifications. These standards are not mandatory but are guarantees of compliance with essential requirements.

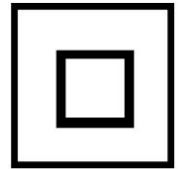


The symbol ROHS (Restriction of use of some Hazardous Substances) on the Environmental Protection, certifies that for each of the five hazardous substances • Lead • Mercury • (hexavalent) chromium • products for protection against flames PBB and PBDE, the peak concentration is equal to or less than 0.1% of



the weight of homogeneous material, and 0.01% for the 6th • cadmium.

The symbol "DOUBLE SQUARE" means a double insulated. A basic insulation and supplementary insulation. This device requires no connection to the mass of a protective conductor grounded. The materials are said : double insulation class II.



The symbol "GLASS / FORK" means that the device is compatible and can come into contact with foodstuffs.



The symbol "TRIMAN" indicates that the consumer is invited to dispose the product as part of a separate collection (eg recycling bin, waste, voluntary intake point).



For more information : <http://www.quefairedemesdechets.fr>

FIRST USE

Before first use, remove the unit and all accessories carefully and paying attention to the sharp accessories.

Clean with soap and water, bowls and all accessories. Rinse and dry thoroughly. Clean the outside and inside of the machine cabinet with a damp cloth and wipe dry.

WARNING

- This appliance should be used strictly in accordance with these instructions.
- Never try to operate the appliance without the **Bowl** in place so as to avoid accidentally touching the moving blade.

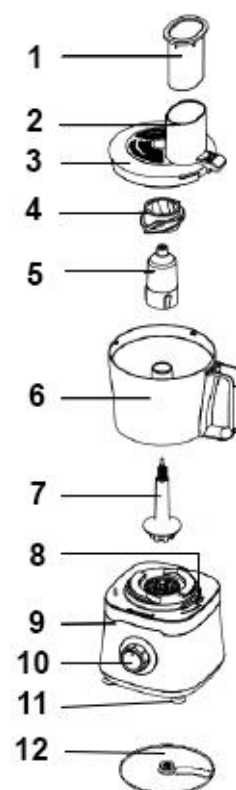
IMPORTANT : PROCESSING OF FOOD CAN BE DONE WITHIN A SHORT TIME OF OPERATION.

DURING OPERATION, MAKE SURE THAT THE PROCESSOR IS NOT SWITCHED ON CONTINUOUSLY FOR LONGER THAN THE TIME SPECIFIED.

ALSO ALLOW ENOUGH REST TIME BEFORE THE NEXT OPERATION.

TO KNOW ITS UNIT

1. Pusher
2. Feeding tube
3. Lid
4. Chop knife
5. Support of the accessory (knife, slicer ...)
6. Bowl
7. Drive shaft of the accessory support
8. Anti-start-up safety system
9. Engine Base
10. Speed Selector (2 speeds + pulse)
11. Non-slip feet
12. Slicing / grating disc



USE

- Unroll the power cord completely.
- Check that the tension in force in the country where you are, corresponds to that indicated on the apparatus.
- Connect the apparatus in a correct socket-outlet, (and connected to the ground if the unit is Class I), to avoid any danger.
- Disconnect the power source cable before any operation of cleaning of maintenance and accessories assembly.
- Never modify the appliance in anyway.

GENERAL OPERATION

To mix

- Attach the accessory that you intend to use.
- Place the Bowl onto the body.
- Place the ingredients into the Bowl.

To cut or shred

- install the multifunction disc in the desired direction or slicer or rasp on the other side.
- Insert the cover.
- Connect the appliance and set the selector switch to the selected speed 1 or 2.

CAUTION: If the bowl is not properly engaged, on the engine block, the Engine will not be able to start.

If the bowl lid is not properly seated on the motor unit, the

motor will not be able to start.

- Insert the ingredients (eg Carrots ...) in the lid aperture.

NOTE: From this moment until the end of use, do not separate the bowl from the motor.

PULSE: By turning the speed selector to the left, you will give a fast impulse and by releasing, you will stop the device.

- After use, unplug the appliance and wait for all moving accessories to come to a complete stop.

BLADES - CHOPPING

- You can chop foodstuff including vegetables, raw or cooked meats.
- Depending on the type of food, you can process up to 300g of foodstuff.

This operation can be carried out with 15 seconds ON and 15 seconds OFF.

Caution: Always stop the machine as soon as the dough has formed a paste. This operation can be carried out with rest periods of 2 minutes.

DISKS - GRATING/SLICING/CHIPPING

- For grating, insert the Spindle into the centre of the Bowl.
- Reversible Grating/Slicing Disk with the Grating Blade side facing up so that the Disk around the Spindle penetrates the three slots around the centre of the disk. Rotate the disk by gripping the Spindle as shown in the figure and turn until it locks it into the disk.
- For slicing, use the Slicing Blade with the blade side facing up.
- For chipping, use the Chop Knife
- Attach the Chop Knife onto the Bowl Axle in the motor and assemble the Bowl Lid.
- Cut potatoes, carrots, cucumbers etc, into pieces and place the ingredients into the feed chute of the Bowl Lid.
- Use the Pusher to push food down the feed chute.

Never use your fingers or other utensils.

Operation hints:

- Depending on the type of food, you can prepare up to 0.3kg each time within 15 seconds.
This operation can be carried out with rest periods of 1 minutes.
- The wider ingredients you cut, the longer the chips will be.

CLEANING AND MAINTENANCE

Be careful when handling the blades to clean them, they are extremely sharp. Before cleaning, always: switch off the appliance, disconnect the apparatus and let it cool.

Clean the outside of the apparatus with a sponge or slightly wet linen.

The parts (removable) in contact with food like plate, bowl, forks, Spatula etc. can be washed in hot water with sponge and soft detergent or put in the dishwasher.

Never plunge the apparatus in water or all other liquid!

Do not use abrasive cleaners, gritting, or metal brush or another cutting object.

Function	Type of Food	Accessory	Maximum Capacity
Chopping	Onions, other vegetables, fruit, raw and cooked meat or fish	Chopper Knife	300g
Grating	Vegetables and fruit	Grating Knife	Until bowl is full
Slicing	Vegetables and fruit	Slicing Knife	Until bowl is full

STORAGE

- Ensure the unit is completely cool and dry.
- Do not wrap the cord around the appliance, as this will cause damage.
- Keep the appliance in a cool, dry place and out of reach from children.

GUARANTEE

Before being delivered, all our products are subjected to a rigorous control.

This apparatus is guaranteed 24 months starting from the date of purchase by the consumer.

The documents in proof of guarantee are :

- The invoice and
- The filled and stamped warrantee plate (located on side or bottom of the gift box). Without these documents in proof, no free replacement, nor no free repair, can be carried out.

During the warranty period, we deal for free, the defects of the apparatus or the accessories, rising from a defect of materials or manufacture by repair or, replacement. The services within the framework of the guarantee do not involve any extension of the warranty period and does not give right to a new guarantee ! In the event of recourse to the guarantee, bring back the complete apparatus to your retailer, in its original packing, accompanied by the proofs of purchase.

The breakage of parts out of glass or plastic is, in all the cases, not warranted.

Defects on the accessories or the wearing parts (for example: coals of engines, hooks, drive belts, remote control of replacement, teeth brushes of replacement,

webs etc) as well as cleaning, maintenance or it replacement of wearing parts are not guaranteed and are thus to pay !
In the event of foreign intervention, the guarantee becomes null and void.
After flow of the warranty period, repairs can be carried out, against payment, by a specialized trade or a repair service.

SPECIFICATIONS

Power supply	220-240V~ 50/60Hz
Power	600-800W
Norm	Class II

Made in PRC

The characteristics can change without prior notice.

CAUTION: In order to minimize the risks of electric shock, In the event of breakdown, not to open the case but to call upon a qualified technician for repairs.

This device complies with EC directives, it was controlled according to all current European directives, applicable such as: electromagnetic compatibility (EMC) and low voltage (LVD).

This device has been designed and manufactured in compliance with the latest regulations and technical requirements for safety.

**Imported by Sotech International
PARC "LE PERIPOLE" N° A-107
33, Avenue du Marechal de Lattre de Tassigny
94120 FONTENAY sous-bois – France**