

### ELECTRIC AIR COOLER

### INSTRUCTION MANUAL



Dear consumer, Please read these instructions carefully before use in order to avoid damage due to incorrect use and to better understand the functions of this product. Please pay particular attention to the safety guide.

If you pass the device on to a third party, these Operating Instructions must also be handed over.

Please keep them for future references.



## IMPORTANT SAFEGUARDS

- Please read these instructions carefully before use.
- Keep present instructions for future references.
- Check that your mains voltage corresponds to that stated on the appliance.
- Only use the appliance for domestic purposes and household or similar applications such as:
  - staff kitchen areas, in shops, offices and other working environments;
  - by clients in hotels, motels and other residential type environments;
  - Environment type like :
    - Farm Houses • Bed and Breakfast.
- Only use the appliance in the way indicated in these instructions.
- Never use this unit near bathtub, shower, wash-hand basins or other containers with water.
- Never use this apparatus near water projections.
- Never use this apparatus with the wet hands.
- If, unfortunately the apparatus is wet, immediately withdraw the cord of the socket-outlet.
- Inform potential users of these instructions.
- Never leave the appliance unsupervised when in use.
- The appliance must be used only for its intended purpose. No responsibility can be taken for any possible damage caused by incorrect use or improper handling.
- Children and persons with disabilities are not always aware of the danger posed by the use of appliances.

- This device can be used by children aged 8 years and older and adults, with reduced physical, sensory or mental capabilities or lack of experience and knowledge, if they have been given supervision or instruction concerning use of the appliance in a safe way and understand the hazards involved.
- Cleaning and maintenance must not be made by children without supervision.
- Keep the appliance and its cord out of reach of children aged less than 8 years of age when it is energized or cooling down.
- This device is not a toy, do not leave children or people with disabilities to play with.
- In order to ensure your children's safety, please keep all packaging (plastic bags, boxes, polystyrene etc.) out of their reach.
- Warning! Never use without the guards in place. After assembly, do not remove the guards for maintenance purpose or cleaning.
- Caution! Do not allow small children to play with the foil:

□

### **THERE IS A DANGER OF SUFFOCATION!**

- From time to time check the cord for damages. Never use the appliance if cord or appliance shows any signs of damage.
- Never immerse the appliance in water or any other liquid for any reason whatsoever.
- Never place it into the dishwasher.
- Never use the appliance near hot surfaces.
- Do not operate the appliance with a damaged cord or plug, or after the appliance has been damaged in any manner. If the supply cord is damaged, it must be replaced by the manufacturer or its service agent or a similarly qualified person in order to avoid a hazard.

- ❑ Disconnect the power source cable before any operation of cleaning of maintenance and accessories assembly.
- ❑ Disconnect the power source cable when filling and cleaning
- ❑ Never use the appliance outside and always place it in a dry environment.
- ❑ Never use accessories, which are not recommended by the producer. They could constitute a danger to the user and risk to damage the appliance.
- ❑ Never use any other connector than the one provided.
- ❑ Never move the appliance by pulling the cord. Make sure the cord cannot get caught in any way.
- ❑ Never wind the cord around the appliance and do not bend it
- ❑ Ensure that the power cord does not come into contact with hot parts of this unit.
- ❑ Make sure the appliance has cooled down before cleaning and storing it.
- ❑ The temperature of accessible surfaces may be very high when the appliance is operating. Never touch these parts, of apparatus, to avoid burning itself.
- ❑ Make sure the appliance never comes into contact with flammable materials, such as curtains, cloth, etc...& the power cord and plug do not come in contact with water.
- ❑ Before cleaning, always unplug the appliance from the power supply and let it cool down.
- ❑ This appliance is not intended to be operated by means of an external timer or separate remote-control system.
- ❑ Always place the unit on a flat surface. Ensure, also, not to cover the device and not to put anything on it.
- ❑ Always remove the plug from the wall socket when the appliance is not in use.
- ❑ When using an extension lead always make sure that the entire cable is unwound from the reel. Use solely CE

approved extension leads. Input power must be at least 16A, 250V, 3000W.

- ❑ Incorrect operation and improper use can damage the appliance and cause injury to the user.
- ❑ This device, designed for home use, complies with standards relating to this type of product.
- ❑ The appliance must be used and rested on a table or flat & stable surface.
- ❑ The item must not be left unattended when it is connected to main supply.
- ❑ The item is not to be used, if it has been dropped or if there are visible signs of damage.
- ❑ This appliance is only intended for household use.
- ❑ Regarding filling, cleaning and descaling, please refer to below paragraphs.

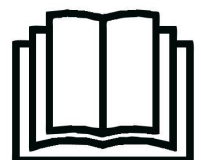
## **SPECIFIC SAFETY REQUIRED FOR THIS PRODUCT**

1. Use the fan always set it on a flat surface.
2. Do not carry the device by holding the power cord.
3. Do not insert objects through the protective grill.
4. Do not use the device in a bathroom
5. Always use the fan with the included foot and upright.
6. Do not use near curtains etc.

No warranty will be applied if the appliance is used for other than its intended use.

## **GENERAL INFORMATION**

The symbol "OPEN BOOK" means a recommendation to read important things contained in the record.



The symbol "BIN" crossed out, abbreviation WEEE (Waste of Electrical and Electronic Equipment) means that at the end of life, it should not be discarded with household waste, but filed to the sorting of the locality. Waste recovery can help preserve our environment.



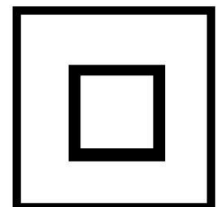
The symbol "CE" is the guarantee of compliance with harmonized European standards, voluntary, reflecting the essential requirements into technical specifications. These standards are not mandatory but are guarantees of compliance with essential requirements.



The symbol ROHS (Restriction of use of some Hazardous Substances) on the Environmental Protection, certifies that for each of the five hazardous substances • Lead • Mercury • (hexavalent) chromium • products for protection against flames PBB and PBDE, the peak concentration is equal to or less than 0.1% of the weight of homogeneous material, and 0.01% for the 6th • cadmium.



The symbol "DOUBLE SQUARE" means a double insulated. A basic insulation and supplementary insulation. This device requires no connection to the mass of a protective conductor grounded. The materials are said : double insulation class II.



The symbol "TRIMAN" indicates that the consumer is invited to dispose the product as part of a separate collection (eg recycling bin, waste, voluntary intake point).



For more information : <http://www.quefairedemesdechets.fr>

## TO KNOW IT'S UNIT

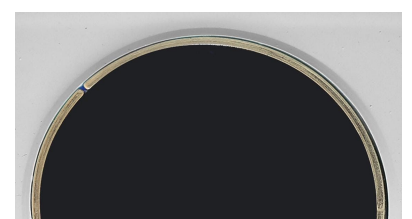
1. Carry handle
2. Control panel
3. Remote Control
4. Sensor for the remote control
5. Ventilation grid
6. Water level of the tank
7. Silent casters



## USE

- Unwind the power cord completely.
- Check that the voltage in the country where you are, corresponds to that indicated on the device.
- Connect the appliance to a good electrical outlet, (earthed if the appliance is class I), to avoid any danger.
- Disconnect the power cable from the power supply before performing any maintenance cleaning and accessory fitting.
- Never modify the device.

## CONTROL PANEL



## ON OFF

By pressing the On / Off button, the unit enters "low" mode.

Pressing the On / Off button again stops the unit.

## SPEED

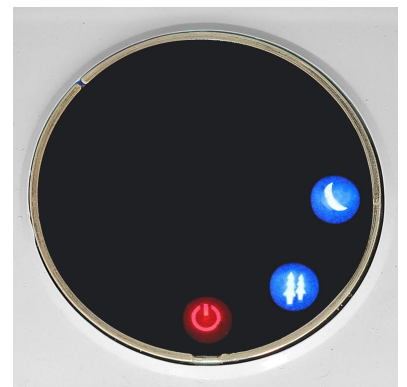
- Press the button once. The air freshener starts, the "Middle speed" indicator on the control panel lights up.
- Press the button a second time (when the air freshener is running), the maximum speed (HIGH) indicator on the control panel lights up.
- Press the button a third time (when the air freshener is operating), the "LOW SPEED" indicator on the control panel lights up.



## MODE

Ventilation cycle type selector works in the following order :

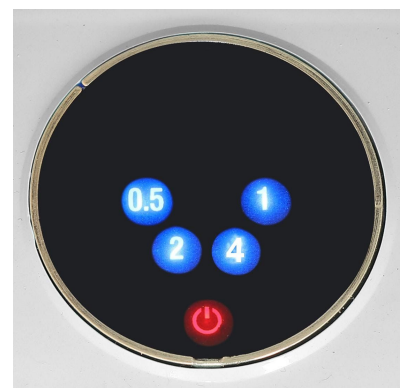
- 1 press : Normal ventilation
- + 1 press : Natural ventilation
- + 1 press : Night ventilation
- 1 more press = Return to Normal Ventilation.



## TIMER

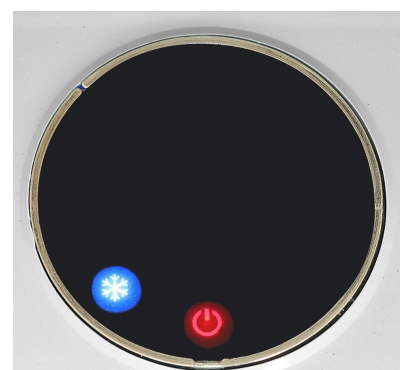
Timer selector on the air cooler works in the following order :

- : 1 Press on the timer button = 30 minutes (display shows 0.5)
- + 1 press = 1H (display 1)
- + 1 press = 2H (display 2)
- + 1 press = 4H (display 4)
- Then, return to 30 min (display 0.5)



## TOUCH "FRESH AIR"

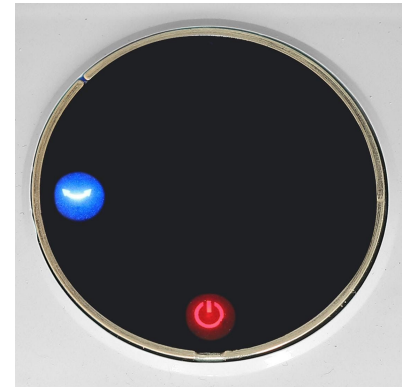
Air freshener function



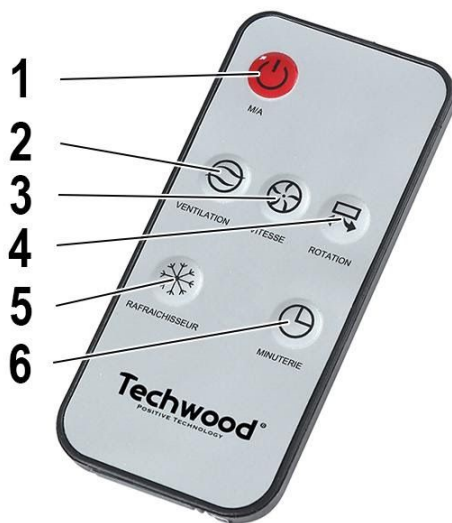
- Press the button once. (When the air freshener is on the road), the "FRESH" indicator on the control panel lights up.
- Press the button a second time on the button to disconnect the function.

### SWING FUNCTION

- Press the button once. (When the air freshener is on), the "Swing" indicator on the control panel will light up and the air flaps will move from right to left and from left to right.



### REMOTE CONTROL



1. On / Off Button
2. Mode : Normal - Natural - Night
3. Speed selector
4. Oscillation control
5. Cooling function control
6. Timer

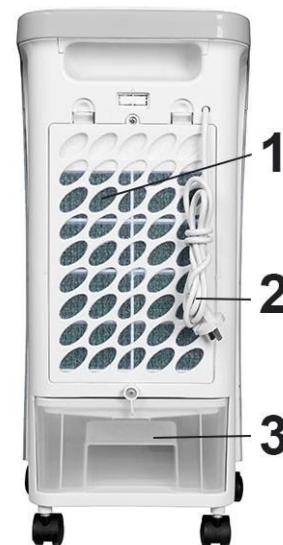
## TO FILL THE WATER TANK

Remove the water tank at the back and bottom of the air cooler (3).  
Fill with fresh or cold water.

Notes :

- *When filling, the water level of the water tank must be above the "Minimum (min)" mark and below the "Maximum (max)" mark.*
- *The water level of the water tank must always be higher than the minimum (min) When the air freshener is in Cooling and Humidification mode.*
- *Iced bins will be placed in the water tank if cooler ventilation is desired.*

**Caution:** *Even after placing the iced block (or ice) in the tank, the water level of the water tank is lower than the "MAX" mark.*



## USING AIR REFRIGERATOR FUNCTION

The air cooler is delivered with 2 ice packs to make a roll. One block in the freezer while the second is used in the tank of the device.

Place the icing blocks in the freezer. After 24H, remove the water tank and place the frozen block in the tank. Add water without exceeding the MAX mark.

The system stores cold and slowly absorbs the warmer recovered water. The cooler system refreshes the water in the tank to make it lower than the environment. So, The tank filled with water and ice allows the air cooler to blow cooler air.

## CAUTION

- Before the first use, check that the unit has been correctly assembled.
- When the appliance is working, do not insert fingers or objects through the grid or into the body of the machine.
- When using a mosquito repellent product, make sure that it is out of reach of children, and if it is accidentally swallowed, seek immediate medical attention.
- Do not place this unit on a sloping floor to prevent tipping, and, do not remove the water tank when the unit is running.
- If the device accidentally spills when it contains water,
  - Unplug the power cord.
  - Remove the water tank

**Check that there is no water accumulated in the unit before reuse.**

When using the unit :

- Do not add disinfectant, vinegar, perfume or essential oils.
- Change the water every 2 days, because the water, in the water tank, can easily generate bacteria.
- Clean the tank every 2-3 weeks.

*NOTE : The unit is intended for indoor use.*

## **CLEANING AND MAINTENANCE**

The fan requires little maintenance.

Do not try to repair it yourself. Bring it back to a qualified service, if necessary.

Always unplug the unit and allow it to cool before cleaning.

Clean the outside of the appliance with a sponge or a slightly damp cloth.

Never immerse the appliance in water or any other liquid!

Never use abrasive products, wire brush or other sharp objects.

The front and back grills can be cleaned with a sponge or a soft, damp cloth. (using a soft brush if necessary).

Use only the original accessories.

Grasp and transport the appliance only by the handle.

### **Cleaning the air filter (1)**

Unplug the unit and allow it to cool before cleaning.

Remove the air filter holder. Separate the filter and the support.

Clean the air filter with a neutral cleaner and a soft brush.

Then clean the filter with clean water, let it dry.

Put the filter back in the holder and put it back into the device.

### **Cleaning the water filter**

Unplug the unit and allow it to cool before cleaning.

Remove the tank (3)

Remove the filter holder, Separate the filter and the holder.

Clean the filter with clean water, let it dry.

Put the filter back in the holder and put it back into the device.

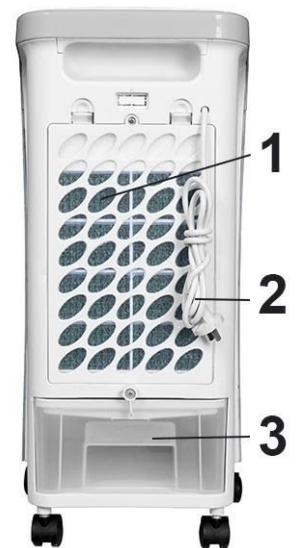
*Notes : To prevent leaks, the water filter should be handled gently.*

### **Cleaning the water tank (3)**

Unplug the unit and allow it to cool before cleaning.

Remove the water tank. Wipe the scale with a soft scraping sponge and commercial detergent.

Rinse the tank with clear water and replace it in the air cooler.



## **STORAGE**

- Ensure the unit is completely cool and dry.
- Do not wrap the cord around the appliance, as this will cause damage.
- Keep the appliance in a cool, dry place and out of reach from children.

## **GUARANTEE**

Before being delivered, all our products are subjected to a rigorous control. This apparatus is guaranteed 24 months starting from the date of purchase by the consumer.

The documents in proof of guarantee are:

- The invoice and
- The filled and stamped warrantee plate (located on side or bottom of the gift box). Without these documents in proof, no free replacement, nor no free repair, can be carried out.

During the warranty period, we deal for free, the defects of the apparatus or the accessories, rising from a defect of materials or manufacture by repair or, replacement. The services within the framework of the guarantee do not involve any extension of the warranty period and does not give right to a new guarantee! In the event of recourse to the guarantee, bring back the complete apparatus to your retailer, in its original packing, accompanied by the proofs of purchase.

The breakage of parts out of glass or plastic is, in all the cases, not warranted. Defects on the accessories or the wearing parts (for example: coals of engines, hooks, drive belts, remote control of replacement, teeth brushes of replacement, webs etc) as well as cleaning, maintenance or it replacement of wearing parts are not guaranteed and are thus to pay!

In the event of foreign intervention, the guarantee becomes null and void.

After flow of the warranty period, repairs can be carried out, against payment, by a specialized trade or a repair service.

## **SPECIFICATIONS**

Power supply	220-240V~ 50Hz
Power	80W
Norm	Class II
Maximum fan flow rate	5.3m <sup>3</sup> /min
Fan power input	80W
Service value	0.07(m <sup>3</sup> /min)/W
Standby power consumption	N/AW
Fan sound power level	65dB(A)
Maximum air velocity	8meters/sec
Measurement standard for Service value	(EU) No 206/2012

EN 50564:2011  
IEC 60879:1986(corr.1992)

Made in PRC

*The characteristics can change without prior notice.*

CAUTION: In order to minimize the risks of electric shock, In the event of breakdown, not to open the case but to call upon a qualified technician for repairs.

This apparatus satisfied EC directives, it was controlled according to all the European current directives, like: electromagnetic compatibility (EMC) and low tension (LVD).

This apparatus was designed and manufactured in respect of the last safety regulations and technical specifications.

**Imported by Sotech International  
" LE PERIPOLE " N°A-107  
33, Avenue du Marechal de Lattre de Tassigny  
94120 Fontenay sous-bois - France**