

## ELECTRIC CORKSCREW

### Instruction manual



Dear consumer, Please read these instructions carefully before use in order to avoid damage due to incorrect use and to better understand the functions of this product. Please pay particular attention to the safety guide.

If you pass the device on to a third party, these Operating Instructions must also be handed over.

Please keep them for future references.

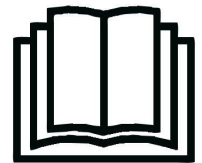
## IMPORTANT SAFEGUARDS

- Please read these instructions carefully before use.
- Keep present instructions for future references.
- Only use the appliance for domestic purposes and household or similar applications such as:
  - staff kitchen areas, in shops, offices and other working environments;
  - By clients in hotels, motels and other residential type environments;
  - Environment type like :
    - Farm Houses • Bed and Breakfast.
- Only use the appliance in the way indicated in these instructions.
- Inform potential users of these instructions.
- Never leave the appliance unsupervised when in use.
- The appliance must be used only for its intended purpose. No responsibility can be taken for any possible damage caused by incorrect use or improper handling.
- This appliance can be used by children aged from 8 years and above and persons with reduced physical, sensory or mental capabilities, or lack of experience and knowledge if they have been given supervision or instruction concerning use of the appliance in a safe way and understand the hazards involved.
- Children shall not play with the appliance.
- Cleaning and user maintenance shall not be made by children without supervision.
- In order to ensure your children's safety, please keep all packaging (plastic bags, boxes, polystyrene etc.) out of their reach.
- Caution ! Do not allow small children to play with the foil :  
**THERE IS A DANGER OF SUFFOCATION !**

- ❑ Never immerse the appliance in water or any other liquid for any reason whatsoever.
- ❑ Never place it into the dishwasher.
- ❑ Never use the appliance near hot surfaces.
- ❑ Keep the appliance dry.
- ❑ Never use accessories, which are not recommended by the producer. They could constitute a danger to the user and risk to damage the appliance.
- ❑ The item is not to be used, if it has been dropped or if there are visible signs of damage or if it is leaking.
- ❑ Regarding the instructions for cleaning, thanks to refer to the below paragraph of the manual.
- ❑ This appliance is only intended for household use.

## GENERAL INFORMATION

The symbol "OPEN BOOK" means a recommendation to read important things contained in the record.



The symbol "BIN" crossed out, abbreviation WEEE (Waste of Electrical and Electronic Equipment) means that at the end of life, it should not be discarded with household waste, but filed to the sorting of the locality. Waste recovery can help preserve our environment.



The symbol "CE" is the guarantee of compliance with harmonized European standards, voluntary, reflecting the essential requirements into technical specifications. These standards are not mandatory but are guarantees of compliance with essential requirements.



The symbol ROHS (Restriction of use of some Hazardous Substances) on the Environmental Protection, certifies that for each of the five hazardous substances • Lead • Mercury • (hexavalent) chromium • products for protection against flames PBB and PBDE, the peak concentration is equal to or less than 0.1% of the weight of homogeneous material, and 0.01% for the 6th • cadmium.



The symbol "TRIMAN" indicates that the consumer is invited to dispose the product as part of a separate collection (eg recycling bin, waste, voluntary intake point).



For more information : <http://www.quefairedemesdechets.fr>

## CLEANING AND MAINTENANCE

- Clean the outside of the apparatus with a sponge or slightly wet linen.
- Never plunge the apparatus in water or all other liquid!
- Do not use abrasive cleaners, gritting, or metal brush or another cutting object.
- Keep the appliance in a cool, dry place and out of reach from children.

## SPECIFIC WARNINGS FOR THIS APPLIANCE

- Never force the mechanism or prevent it from function.
- Do not touch the sharp spiral (risk of injury)
- Only hold the corkscrew by the body plastic.

## BATTERY INSTALLATION



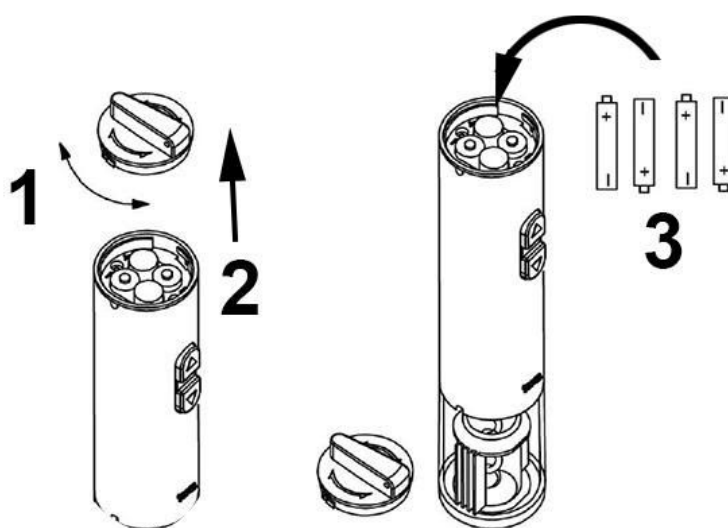
Remove the capsule cutter from its housing on the top of the device.

Turn the battery compartment cover 45 ° (1) and remove it (2).

Insert 4 x LR6 or AA batteries into the battery compartments (3).

*Note : Respect the + and - polarity.*

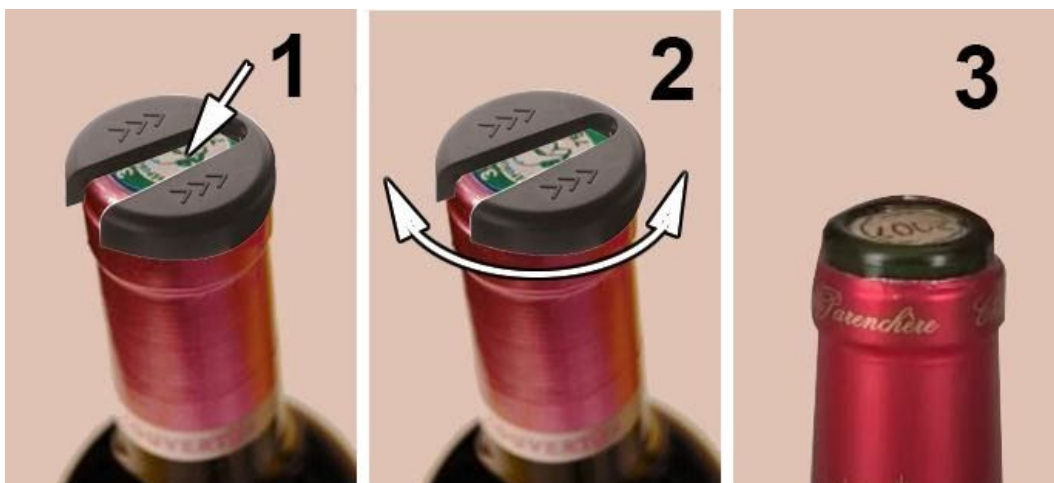
Replace the battery compartment cover and turn it the other way to close it.



### USE

## Open a bottle of wine

### A. Remove the capsule



1. Place the foil cutter on the bottle cap.
2. Rotate left / right and right / left to cut the capsule covering the neck.
3. Remove the cut part

### **B. Using the electric corkscrew**

1. Place the electric corkscrew on the neck of the bottle.
2. Hold the corkscrew with one hand on the bottle and press the bottom button.
3. The screw of the corkscrew sinks into the cork and the cork comes out slowly from the bottle.

*Note : If the corkscrew is not held on the bottle, the cork may not come out properly.*

When the mechanism stops, the cork is taken out of the bottle and remains in the corkscrew.



To release the cap, Press the top button (4).  
The plug comes out (5) automatically and fully.

*Note : Some plastic or synthetic caps may not come out properly due to their sizes or the materials they are made of.*

*In this case, finish removing the cap manually.*

Always replace the capsule cutter before storing the corkscrew.



## **GUARANTEE**

Before being delivered, all our products are subjected to a rigorous control. This apparatus is guaranteed 24 months starting from the date of purchase by the consumer.

The documents in proof of guarantee are :

- The invoice and
- The filled and stamped warrantee plate (located on side or bottom of the gift box). Without these documents in proof, no free replacement, nor no free repair, can be carried out.

During the warranty period, we deal for free, the defects of the apparatus or the accessories, rising from a defect of materials or manufacture by repair or, replacement. The services within the framework of the guarantee do not involve any extension of the warranty period and does not give right to a new guarantee ! In the event of recourse to the guarantee, bring back the complete apparatus to your retailer, in its original packing, accompanied by the proofs of purchase.

The breakage of parts out of glass or plastic is, in all the cases, not warranted. Defects on the accessories or the wearing parts (for example: coals of engines, hooks, drive belts, remote control of replacement, teeth brushes of replacement, webs etc) as well as cleaning, maintenance or it replacement of wearing parts are not guaranteed and are thus to pay !

In the event of foreign intervention, the guarantee becomes null and void.

After flow of the warranty period, repairs can be carried out, against payment, by a specialized trade or a repair service.

## **SPECIFICATIONS**

Power      4 x 1,5V LR06 OR AA BATTERIES (NOT SUPPLIED)  
                    Made in P.R.C

*The characteristics can change without prior notice.*

## **ENVIRONMENTAL PROTECTION**

(Destruction of batteries)

To remove the battery:

The appliance must be disconnected from the supply mains when removing the battery.

- Open the battery compartment and retrieve the battery or batteries.
- THE BATTERY MUST BE REMOVED BEFORE THE UNIT IS GIVEN TO REBUS.

- BATTERY CONTAINS NICKEL CADMIUM AND / OR LITHIUM AND / OR NICKEL-METAL HYDRIDE, THE BATTERY MUST BE ELIMINATED IN A SAFE WAY.

DO NOT THROW IN A TRASH CAN, BUT GIVE IN CENTRE OF WASTE.

**Imported by Sotech International  
" LE PERIPOLE " N°A-107  
33, Avenue du Marechal de Lattre de Tassigny  
94120 Fontenay sous-bois - France**

The symbol " CMIM " is the guarantee of compliance with optional harmonized **Moroccan** Standards, which reflect the essential requirements in terms of technical specifications.

These standards are not mandatory but ensuring compliance with the essential requirements.

